

RETAIL

VENUE: Stoke on Trent College, Burslem Campus

DURATION OF COURSE: 1 year

SELECTION CRITERIA:

- A real interest in the subject area
- A willingness to complete practical and written tasks
- Entry 2-Entry 3 depending upon the level undertaking
- Level 1 in Maths and English (however these can be developed if necessary)

BRIEF DETAILS OF COURSE:

This course is for those who work or have a desire to work within a retail establishment. It will give you an underpinning knowledge for the process required to successfully maintain a retail business position.

This course covers understanding the business of retail, customer service skills, teamwork skills, understanding the retail selling process, looking after customers in a retail environment, skills for shopping and handling stock in a retail environment.

MATHS & ENGLISH

All courses will include Maths and English.

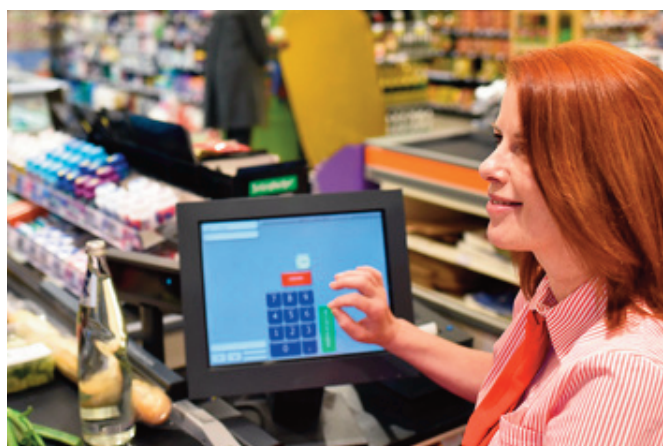
This part of the course will help you to improve your Maths and English skills and your friendly and experienced tutor will make sure the course uses everyday experience relevant to you.

HOW WILL I BE ASSESSED?

This course is assessed through portfolios and completion of assessment booklets.

PROGRESSION ROUTE:

Further courses in retail, business studies, customer service, warehousing and production at Level 1 or Level 2.



S4L16-008

**FOR MORE INFORMATION CONTACT
THE FOUNDATION BRIDGE ACADEMY:**

Telephone: 01782 603590 - Kerry Parry (Team Leader)

Email: kerry.parry@stokecoll.ac.uk

Stoke on Trent College, Burslem Campus, Moorland Road, Burslem, Stoke on Trent, ST6 1JJ

